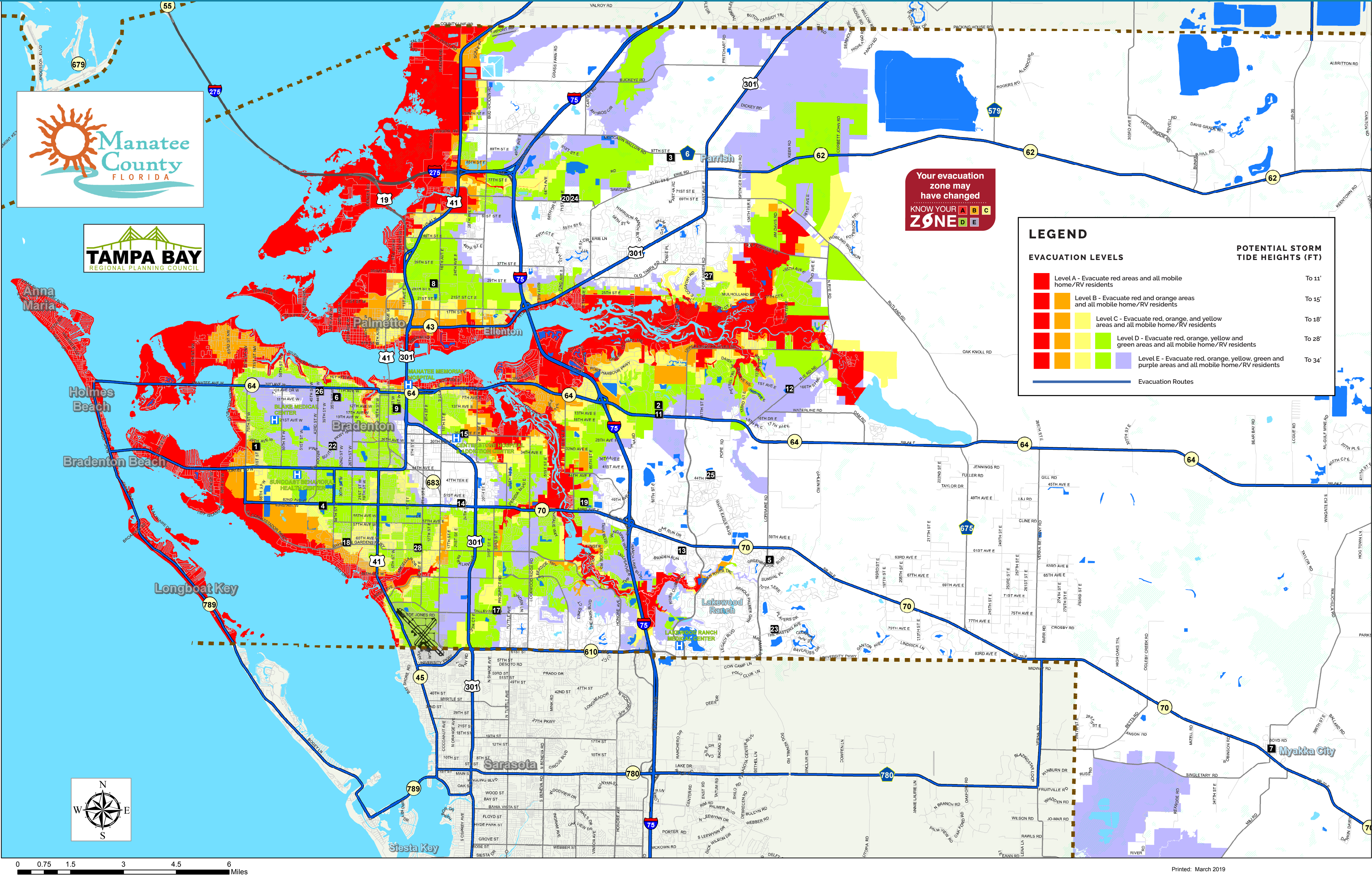


MANATEE COUNTY

EVACUATION LEVELS & SHELTERS



Hurricane Watch: An announcement that hurricane conditions (sustained winds of 74 mph or higher) are possible within the specified area. The hurricane watch is typically issued 48 hours in advance of the anticipated onset of tropical-storm-force winds.

Hurricane Warning: An announcement that hurricane conditions (sustained winds of 74 mph or higher) are expected somewhere within the specified area. The hurricane warning is typically issued 36 hours in advance of the anticipated onset of tropical-storm-force winds.

Tropical Storm Watch: An announcement that sustained winds of 39 to 73 mph are possible within the specified area within 48 hours in association with a tropical storm.

Tropical Storm Warning: An announcement that sustained winds of 39 to 73 mph are expected somewhere within the specified area within 36 hours in association with a tropical storm.

Flood Watch: An announcement that indicates current or developing conditions that are favorable for flooding. A flood warning is typically issued within several hours to days ahead of the onset of possible flooding.

Flood Warning: An announcement to inform the public of flooding that poses a serious threat to life and/or property. A Flood Warning may be issued hours to days in advance of the onset of flooding based on forecast conditions.

Flash Flood: Flooding caused by rapidly rising water level in streams, creeks, rivers, or in urban areas, usually as a result of intense rainfall over a relatively small area or for moderate to intense rainfall over highly saturated or impervious land surfaces.

Tornado Watch: An alert issued by the National Weather Service when conditions are favorable for the development of tornadoes in and close to the watch area. During the watch, people should review tornado safety rules and be prepared to move a place of safety if threatening weather approaches.

Tornado Warning: An alert issued when a tornado is indicated by radar or sighted by spotters; therefore, people in the affected area should seek safe shelter immediately.

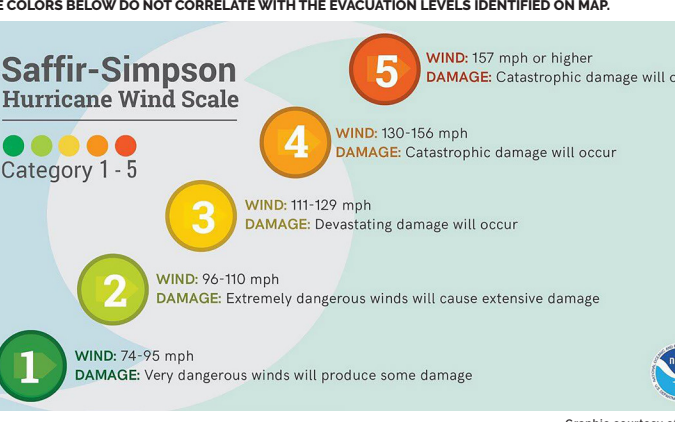
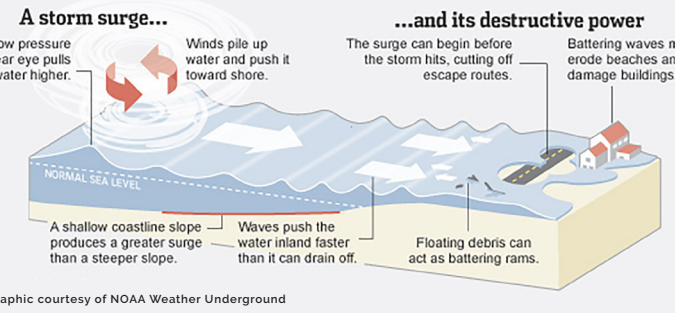
Surge Watch: An announcement that there is the possibility of lifethreatening inundation from rising water moving inland from the shoreline somewhere within the specified area, generally within 48 hours, in association with an ongoing or potential tropical cyclones, or coastal storm.

Surge Warning: An announcement that there is a danger of lifethreatening inundation from rising water moving inland from the shoreline somewhere within the specified area, generally within 36 hours, in association with an ongoing or potential tropical cyclones or coastal storm.

Hurricane Local Statement: A public release prepared by local National Weather Service offices in or near a threatened area giving specific details for its county/parish warning area.

Potentially Dangerous Situation: Particularly Dangerous Situation (PDS) wording is used in rare situations when long-lived, strong and violent tornadoes are possible.

Source: National Hurricane Center (nhc.noaa.gov)



Twitter.com/MCGPublicSafety
Facebook.com/ManateeCountyEmergencyManagement

SHELTER INFO - REFER TO MAP

NO.	SHELTER NAME	ADDRESS
18	BAYSHORE ELEMENTARY SCHOOL	6120 26TH STREET WEST, BRADENTON
19	BRADEN RIVER HIGH SCHOOL	6545 SR 70 EAST, BRADENTON
13	BRADEN RIVER MIDDLE SCHOOL	6215 RIVER CLUB BLVD., BRADENTON
24	BUFFALO CREEK MIDDLE SCHOOL	7320 69TH STREET EAST, PALMETTO
28	DAUGHTREY ELEMENTARY SCHOOL	515 63RD AVE. EAST, BRADENTON
2	FREEDOM ELEMENTARY SCHOOL	9545 STATE ROAD 64 EAST, BRADENTON
25	GULLETT ELEMENTARY SCHOOL	12125 44TH AVE. EAST, BRADENTON
11	HAILE MIDDLE SCHOOL	9501 STATE ROAD 64 EAST, BRADENTON
3	HARVEY ELEMENTARY SCHOOL	8610 115TH AVE. EAST, PARRISH
15	JOHNSON-WAKELAND SCHOOL OF IB	2121 26TH AVE. EAST, BRADENTON
17	KINNAN ELEMENTARY SCHOOL	3415 TALLEYVAST ROAD, SARASOTA
4	LEE MIDDLE SCHOOL	4000 53RD AVENUE WEST, BRADENTON
6	MANATEE HIGH SCHOOL	902 33RD STREET COURT WEST, BRADENTON
5	MCNEAL ELEMENTARY SCHOOL	6325 LORRAINE ROAD, BRADENTON
26	MILLER ELEMENTARY SCHOOL	601 43RD STREET WEST, BRADENTON
20	MILLS ELEMENTARY SCHOOL	7200 69TH STREET EAST, PALMETTO
7	MYAKKA CITY ELEMENTARY SCHOOL	37205 MANATEE AVE., MYAKKA CITY
14	ONECO ELEMENTARY SCHOOL	5214 22ND STREET COURT EAST, BRADENTON
22	PRINE ELEMENTARY SCHOOL	3801 SOUTHERN PARKWAY, BRADENTON
9	RODGERS GARDEN ELEMENTARY SCHOOL	545 13TH AVE WEST, BRADENTON
1	SEABREEZE ELEMENTARY SCHOOL	3601 71ST STREET WEST, BRADENTON
8	TILLMAN ELEMENTARY SCHOOL	1445 29TH STREET EAST, PALMETTO
27	WILLIAMS ELEMENTARY SCHOOL	3404 FORT HAMER ROAD, PARRISH
23	WILLIS ELEMENTARY SCHOOL	14705 THE MASTERS AVENUE, BRADENTON
12	WITT ELEMENTARY SCHOOL	200 RYE ROAD, BRADENTON

Pet-Friendly Shelter	TELEVISION	RADIO
Shelter openings vary with each emergency. Shelter openings will differ by size and intensity of a disaster. Do not go to the shelter until local officials announce that the shelter is open.	WFLA - CH 8 WTSP - CH 10 WTVT - CH 13 WFTS - CH 28 WWSB - CH 40 WWSV - CH 62 BAY NEWS 9	WFLA - 970 AM WWPR - 1490 AM WJIS - 88.1 FM WXTO - 106.5 FM
Stay tuned to local media and the County website for a listing of shelters, to include the Pet-Friendly Shelters, which will be opened for an event.		

WHAT TO BRING FOR SMALL CHILDREN

- Please bring age appropriate items for your child
- Baby food jars- combination of vegetables, fruits, cereals, & meats
- Cereal (child age specific)
- Favorite healthy snacks
- Diaper wipes
- Diapers / pull-ups
- Formula (powered and/or ready-made)
- Oral electrolyte solution, such as Pedialyte
- Juice boxes
- Baby bottles
- Baby feeding spoons
- Nipples for baby bottles
- Diaper rash ointment
- Disposable changing pads
- Infant bathing basin, wash cloths and towels
- Infant hat and booties
- Lightweight blankets
- Portable crib
- Toddler potty seat
- Small toys that do not make noise such as books, cards, puzzles, handheld games with extra batteries
- Any special item that the child may be attached to that provides comfort

IMPORTANT CONTACT INFO

CITIZENS INFORMATION CENTER	941-749-3500
EMERGENCY MANAGEMENT	941-749-3500
SPECIAL NEEDS SHELTER REGISTRY	941-749-3500 ext. 1667
ANIMAL SERVICES	941-742-5933
FLORIDA POWER AND LIGHT	800-468-8243
PEACE RIVER ELECTRIC	800-282-3824
SOLID WASTE	941-792-8811
HIGHWAY PATROL	941-751-7647
SHERIFF'S OFFICE	941-747-3011
AMERICAN RED CROSS	941-792-8686
CATHOLIC CHARITIES	941-714-7829
SALVATION ARMY	941-748-5110
UNITED WAY	941-748-1313
SUNCOAST 2-1-1	2-1-1 Call 2-1-1 for a free and confidential service that helps people find the local resources needed.
NOAA WEATHER RADIO	FIPS code 012081
TDD MESSAGES	941-742-5802
MYMANATEE.ORG	
DO NOT CALL 9-1-1 FOR DISASTER INFORMATION	

USING YOUR COUNTY MAP

- Locate where you live and work on the map.
- Determine whether you are in an evacuation zone, and if so, what level (color).
- If you are in an evacuation zone, or live in a mobile home/RV, decide where you will go if ordered to evacuate. Your choices include:
 - Home of a relative or friend outside the evacuation zone
 - Hotel/motel outside the evacuation zone (make arrangements early)
 - Go to a public shelter
 - As a last resort, leave the area entirely
- If you must go to a public shelter, use your county map to decide which one is convenient. Make sure you verify the shelter is open before you go.

HURRICANE THREAT

- The colored areas on the map are vulnerable to storm surge. Storm surge is produced by water being pushed towards the shore by the force of the winds moving around the storm.
- Storm surge creates a path of destruction, wiping out structures as it rapidly surges inland and then recedes. This is a life threatening situation for anyone who ignores mandatory evacuation orders and stays in vulnerable areas.
- Hurricanes are categorized on a scale of 1 to 5, depending on wind strength and destructive power. The evacuation zones are color-coded to designate the level of storm surge likely to occur.
- If you live in an area ordered to evacuate, gather your family/pets and emergency supplies, secure your home, and leave immediately. Failure to obey a mandatory evacuation order is a violation of state and local laws.

NOTE: All persons living in mobile homes/RVs must evacuate for all mandatory evacuation orders, regardless of where you are located in the county, due to threat of tornado or high velocity winds.

SHELTER-IN-PLACE

Local authorities will give evacuation orders for areas with significant risk of damage resulting from a high wind or storm surge event. Evacuating unnecessarily can cause overcrowded shelters and traffic jams.

If you live in a sound structure outside of the evacuation area (especially if built since 2002 and it is not located in a flood-prone area), sheltering in place is a practical option to consider. If you do not live in a mobile home or RV, you can choose to remain in your home.

Your shelter-in-place location should contain enough non-perishable food, blankets, communication equipment (such as radios), alternate power sources, first aid supplies, necessary medications, and any required durable medical equipment (e.g., hearing aid batteries, catheters) to allow self-sustainment in that location for a minimum of 72 hours.

For a detailed list of supplies recommended for home emergency supply kits, consult ready.gov.

AVAILABLE SPACE IN A SHELTER

Evacuation shelters are opened for the single purpose of protecting life. We open them based on the ability of that facility to withstand the forecasted wind effects and storm surge.

Evacuation shelters do not have generators and offer no services other than a very basic food provision, water, and a limited amount of floor space per person. It is a public environment where there are large numbers of people in close proximity to each other. There are no cots, pillows or blankets provided. Evacuees must bring their own bedding and supplies.

General population: 20 sq. ft. for themselves and all necessary belongings.

Medically-dependent (upon prior registration): 60 sq. ft. for themselves, one caregiver, and all necessary belongings.